

Spectral magnifyer

You will get the details



Superlite 400 with Spectral magnifyer with oblique and line-illumination, 3-fold longpass filters and $\varnothing 3$ mm liquid lightguide in use with a commercially available camera equipment

Additional value

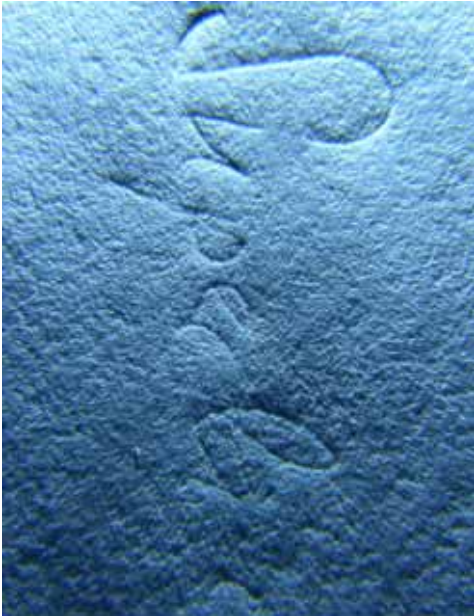
- Magnification for detailed inspection in incident and oblique light
- Intensified contrast by local darkroom-effect
- Camera stand for documentation of traces at the crime-scene
- Handy line illuminator with lightguide for inspection in oblique light

Functions

- Double-lens magnifying optics
- Inspection of specimen in diffused incident light or oblique light
- Enhanced contrast with coated camera longpass-filters diameter $\varnothing 75$ mm aperture (yellow, orange, red) with adapter for 49-77 mm lenses

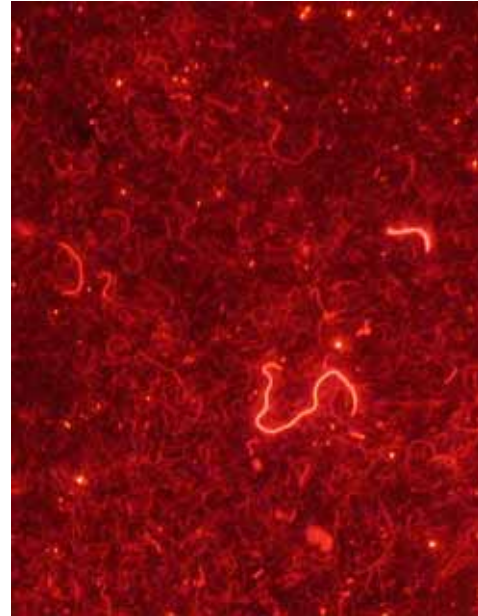
LUMATEC[®]

Simplified image capturing with the Superlite 400 spectral magnifier and lens Zoom-Nikkor ED 8.9-71.2 mm 1:2.8-4.2:



Document inspection

- Indents of handwriting on a paper-pad
- Aperture 5.5, exposure time 1/30 s, ISO 100
- Excitation filter 0 (400-700 nm) oblique-light
- No longpass filter



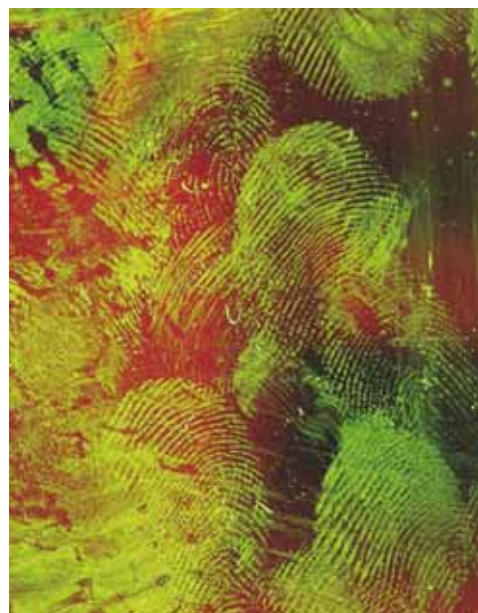
Foreign fibres

- Aperture 4.2, exposure time 1/15 s, ISO 50
- Excitation filter 3 (320-400 nm) incident light
- Red longpass filter



Fingerprint treated with greenwop™

- Aperture 3.7, exposure time 1/5 s, ISO 157
- Excitation filter 5 (440 nm) incident light
- Green longpass filter



Fingerprints, untreated

- Aperture 5.5, exposure time 1/30 s, ISO 100
- Excitation filter 9 (550 nm) incident light
- without longpass-filter